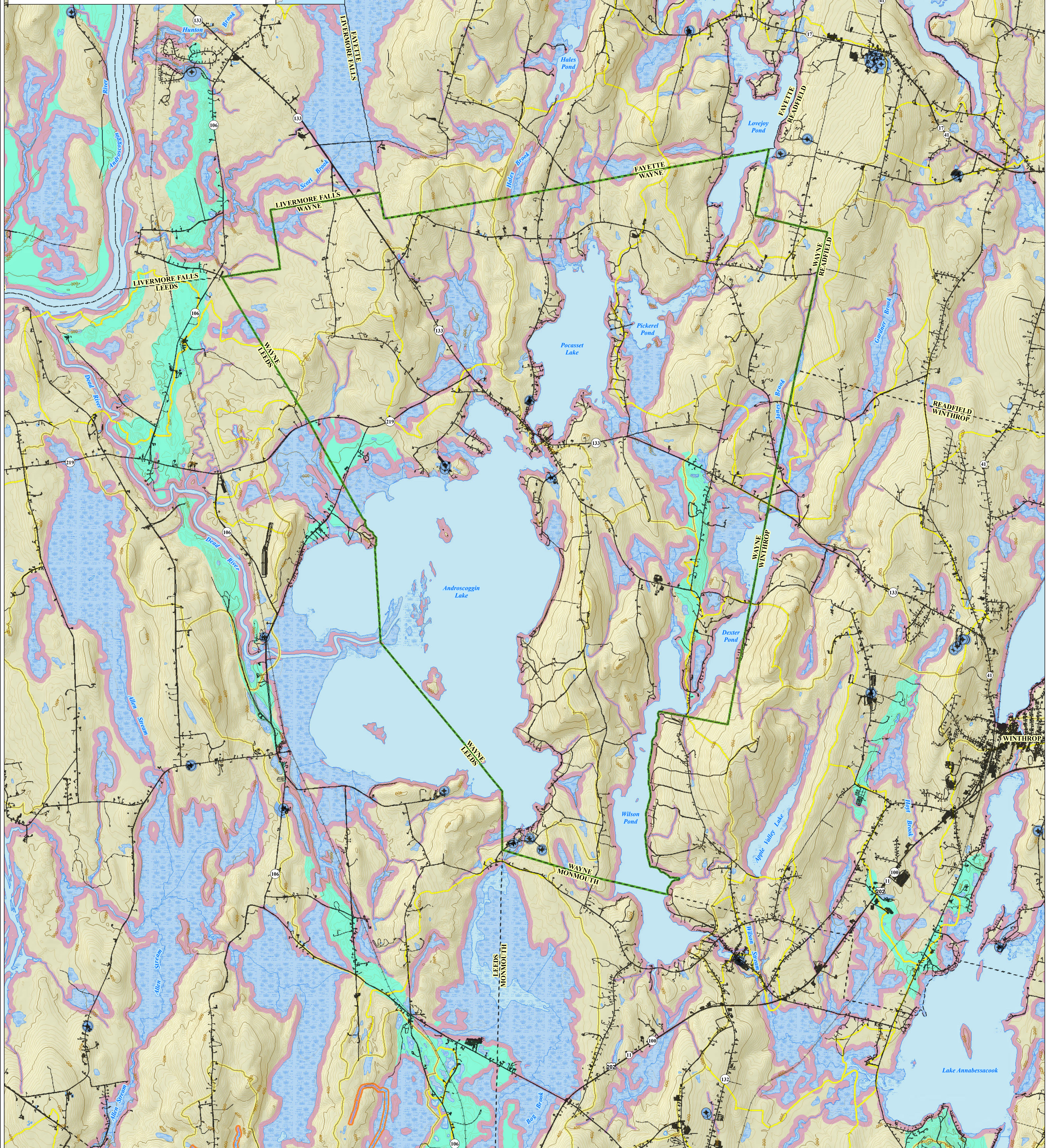


**Beginning with HABITAT**  
 An Approach to Conserving Maine's Natural Space for Plants, Animals, and People  
 www.beginningwithhabitat.org

**Primary Map 1**  
**Water Resources & Riparian Habitats**  
**Wayne**

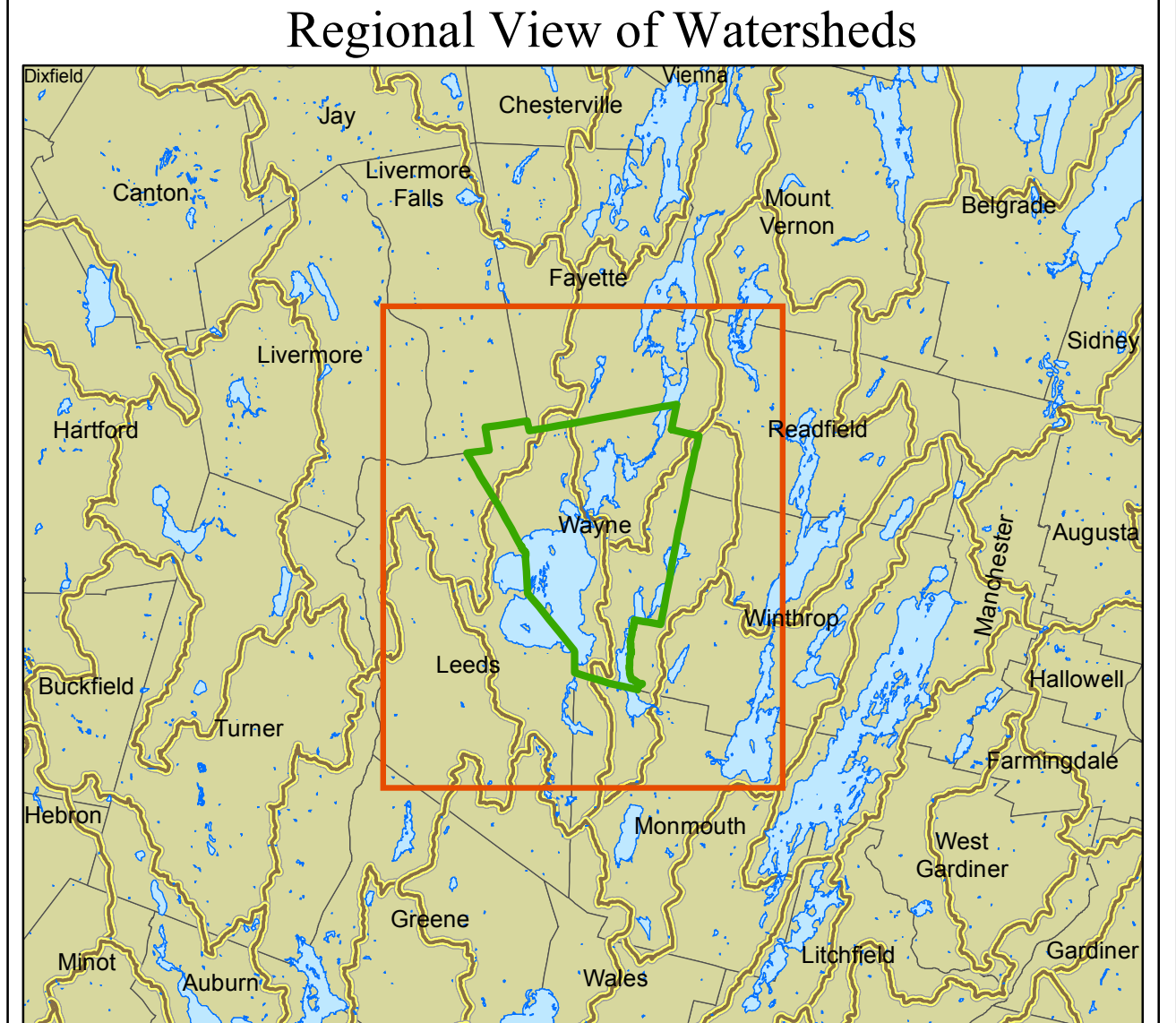
*This map is nonregulatory and is intended for planning purposes only*



**LEGEND**

This map depicts riparian areas associated with major surface water features and important public water resources. This map does not depict all streams or wetlands known to occur on the landscape and should not be used as a substitute for on the ground surveys. This map should be used as a planning reference only and is intended to illustrate the natural hydrologic connections between surface water features. Protecting riparian habitats protects water quality, maintains habitat connections, and safeguards important economic resources including recreational and commercial fisheries.

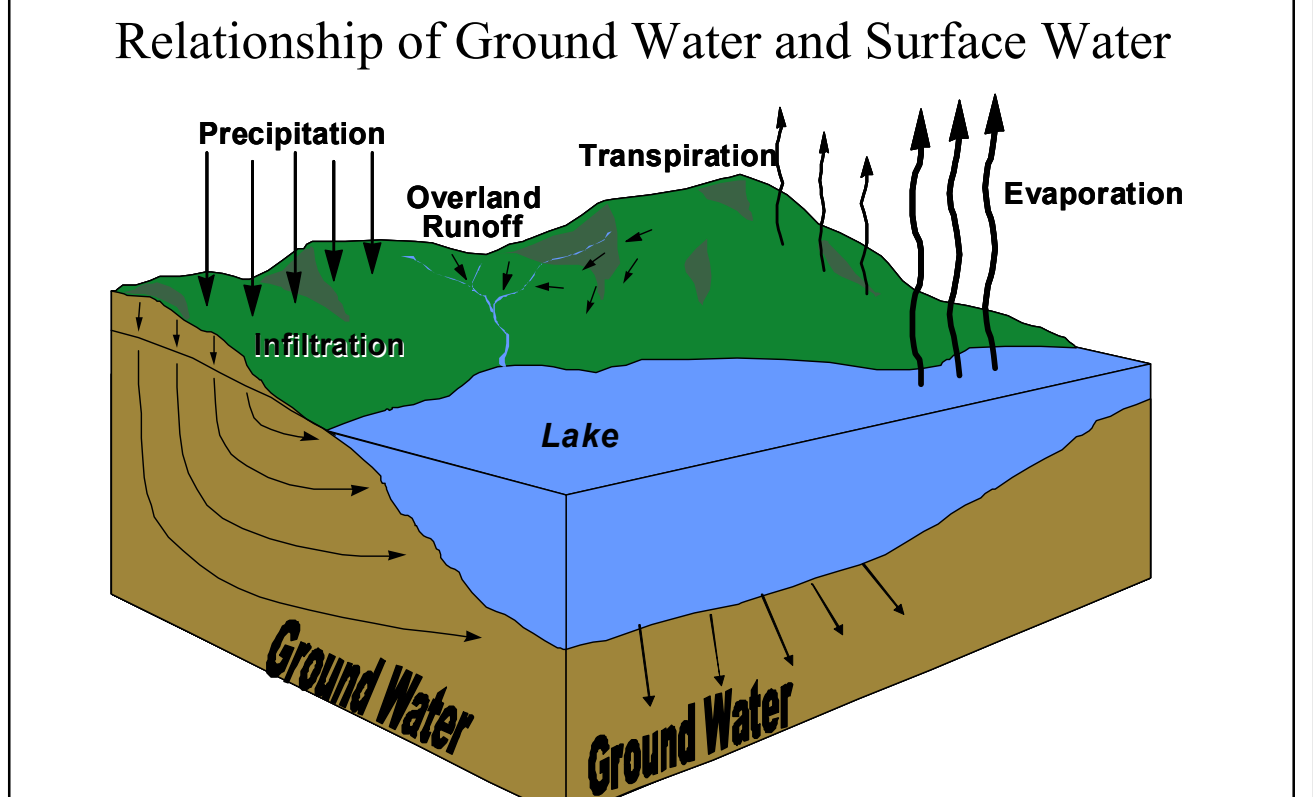
- Selected Town or Area** (Green outline)
- Organized Township Boundary** (Dashed line)
- Unorganized Township** (Dotted line)
- Developed** - Impervious surfaces including buildings and roads (Black lines)
- Subwatersheds** - Drainage divides are grouped together to form subwatersheds. See inset below for more information. (Yellow outline)
- Drainage divides** - These are the smallest hydrologic units mapped in Maine. They contain watershed boundaries for most ponds and rivers in Maine. (Yellow outline)
- NWI Wetlands** - National Wetlands Inventory (NWI) uses aerial photographs to approximate wetland locations. NWI data is not a comprehensive mapping of wetland resources and typically under represents the presence of wetlands on the landscape. The presence of wetlands needs to be determined in the field prior to conducting activities that could result in wetland disturbance. (Blue shading)
- Riparian Habitat** - depicted using common regulatory zones including a 250-foot-wide strip around Great Ponds (ponds  $\geq 10$  acres), rivers, coastline, and wetlands  $\geq 10$  acres and a 75-foot-wide strip around streams. Riparian areas depicted on this map may already be affected by existing land uses. (Pink shading)
- Shellfish Growing Areas** - The Maine Department of Marine Resources maps growing areas for economically important shellfish resources. This map depicts softshell and hard clam resources in order to illustrate the relation of these resources to streams and shoreline areas vital to their conservation. (Orange shading)
- Brook Trout Habitat** - Streams and ponds, buffered to 100 feet, where wild Brook Trout populations have been documented, or managed to enhance local fisheries. (Red shading)
- Public Water Supply Wells** (Blue circle)
- Source protection area** - Buffers that represent source water protection areas for wells and surface water intakes that serve the public water supply. Their size is proportional to population served and/or by the type of water supply system. These buffers range from 300 to 2,500 feet in radius. (Blue circle)
- Aquifers** - flow of at least 10 gallons per minute (Green shading)



A watershed includes all of the land that drains to a common waterbody. The areas within the watershed are linked ecologically by the water, sediment, nutrients, and pollutants that flow through them. For the purpose of mapping "hydrological units", watersheds are often grouped into larger drainages or divided into smaller ones. Drainage divides (shown on main map as yellow line), are the smallest hydrological units and generally drain into small ponds, wetlands, or streams. These units are grouped into subwatersheds (shown on both the main map and the above inset map by the yellow-brown outlines).

1 inch = 4 miles

Subwatersheds (Yellow outline)  
 Main Map Extent (Red outline)



Precipitation is the source of all water. Surface water and ground water are related. Drinking water can come from either source. Ground contaminants can affect both. The relationship between ground water and surface water is part of the hydrologic cycle. Precipitation that falls from the atmosphere as rain or snow reaches the land surface and recharges rivers, lakes, wetlands, and other surface bodies of water directly through overland runoff. Surface water also seeps into the ground through infiltration and eventually reaches the ground water, or through evaporation, returns to the atmosphere. Water evaporates from leaves and stems of plants through transpiration.

**Shoreland Zoning**

Maine's Mandatory Shoreland Zoning Act is intended to protect water quality, conserve wildlife habitat, and preserve the natural beauty of Maine's shoreline areas. Successful implementation requires local awareness of and appreciation for surface water resources and effective enforcement of setback and buffer requirements.

At a minimum, Maine's shoreland zones include all land within:

- 250 feet of the high-water line of any pond over 10 acres, any river that drains at least 25 square miles, and all tidal waters and saltwater marshes;
- 250 feet of a freshwater wetland over 10 acres (except "forested" wetlands); and
- 75 feet of a stream that is either an outlet stream of a great pond, or located below the confluence of two perennial streams as depicted on a USGS topographic map.

Shoreland zoning encourages towns to provide greater protection to their local water resources by applying shoreland zone protections to additional resource types such as smaller streams and wetlands, and rare terrestrial features. For specific guidance regarding Maine's Mandatory Shoreland Zoning Act contact the Dept. of Environmental Protection Shoreland Zoning Unit: 207-287-3901 (Augusta), 207-822-6300 (Portland), 207-941-4116 (Bangor). [www.maine.gov/dep/blw/doc/stand/szpage.htm](http://www.maine.gov/dep/blw/doc/stand/szpage.htm)

**Data Sources**

**DATA SOURCE INFORMATION**  
 (note: italicized file names can be downloaded from Maine Office of GIS)

ROADS	SHS151	Maine Department of Marine Resources;
TOwnSHIP BOUNDARIES	metwp24	softshell_clams, hard_clams
ROADS	metwp24	RIpARIAN BUFFERS
Maine Office of GIS, Maine Department of Transportation (2005); metdtpub		Maine Natural Areas Program (2005)
HYDROLOGY	WELLS_WELL_BUFFERS	WELLS_WELL_BUFFERS
Maine Office of GIS, U.S. Geological Survey (2004); rye24		Maine Office of GIS, Maine Department of Human Services-Drinking Water Program (2004); wells_wellbuf
DEVELOPED	equifer_polygons	AQUIFERS
Maine Office of GIS, Maine Department of Environmental Protection (contact agency for this multiple agency collaboration) (2005); imperv		Maine Office of GIS, Maine Geological Survey (2006); equifer_polygons
NATIONAL WETLANDS INVENTORY	metwp24	DEVELOPED
Maine Office of GIS, U.S. Fish & Wildlife Service (1985); nwi		Maine Office of GIS, Maine Geological Survey (2006); equifer_polygons
		DEVELOPED
		Maine Office of GIS (1994); metdvd
		Maine Office of GIS, U.S. Fish & Wildlife Service (1985); nwi
		BROOK TROUT HABITAT
		Maine Department of Inland Fisheries & Wildlife (2011)

**DATA SOURCE CONTACT INFORMATION**  
 Maine Office of GIS: <http://www.maine.gov/mgis/>  
 Maine Natural Areas Program: <http://www.maine.gov/ocn/nr/mnmap/>  
 Maine Department of Marine Resources: <http://www.maine.gov/dmr/>  
 Maine Department of Transportation: <http://www.maine.gov/dot/>  
 Maine Geological Survey: <http://www.maine.gov/ocn/nr/mgs/mgs.htm>  
 Maine Department of Inland Fisheries & Wildlife: <http://www.maine.gov/ifw/>

**DIGITAL DATA REQUEST**  
 To request digital data for a town or organization, please visit our website: [http://www.beginningwithhabitat.org/the\\_maps/gis\\_data\\_request.html](http://www.beginningwithhabitat.org/the_maps/gis_data_request.html)